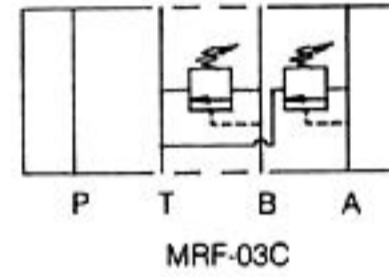
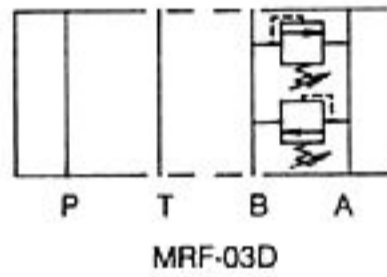
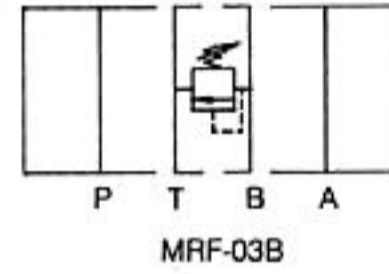
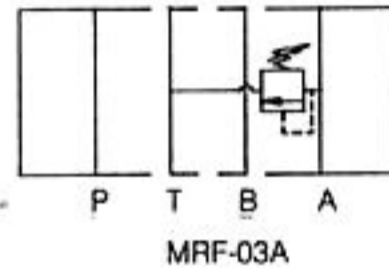
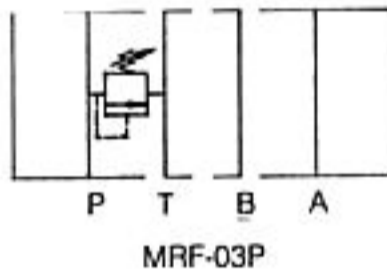


SPECIFICATIONS

Max. operating pressure	210 Kg/cm ² (3000PSI)
Max. flow capacity	70 LPM (20 GPM)

SYMBOLS



HOW TO ORDER

MRF - 03P - K - 1 - 30

DESIGN NUMBER

PRESSURE ADJUSTMENT RANGE :
1 : 8-70KGF/CM² (120-1000PSI)
2 : 35-140KGF/CM² (500-2000PSI)
3 : 70-210KGF/CM² (1000-3000PSI)

ADJUSTMENT MODEL:
K : WITH KNOB
NO CODE: WITHOUT KNOB

FUNCTION PORT :
P : P PORT
A : A PORT
B : B PORT
C : A&B PORT VENTING TO TANK
D : A&B PORT CROSS OVER RELIEF

PORT SIZE : 3/8" (D05)

MODULAR RELIEF VALVE

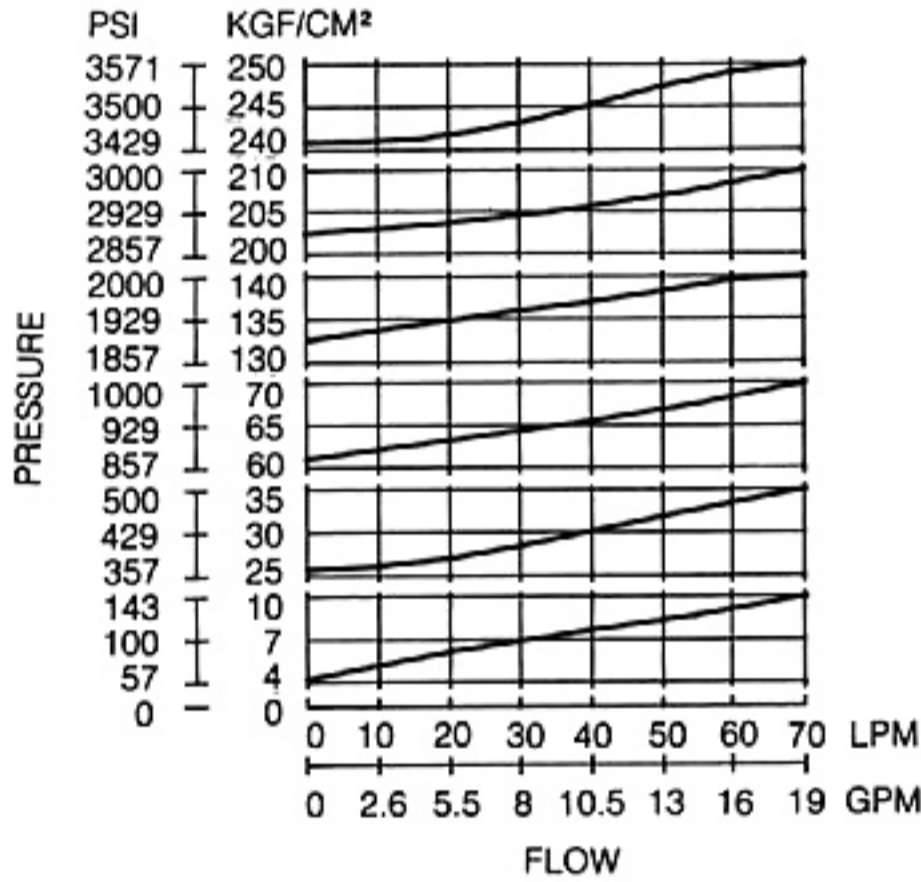
MRF-03 SERIES

PERFORMANCE CURVES

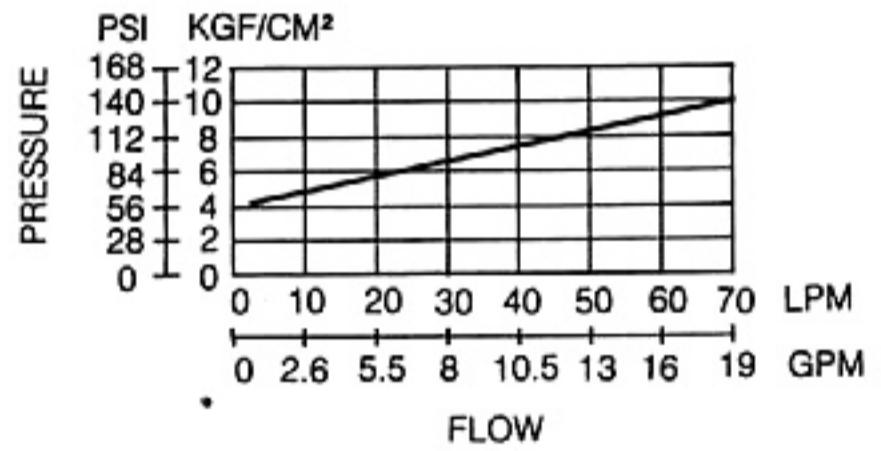
TEST CONDITIONS

Viscosity: 35 CST
 Temperature: 50°C

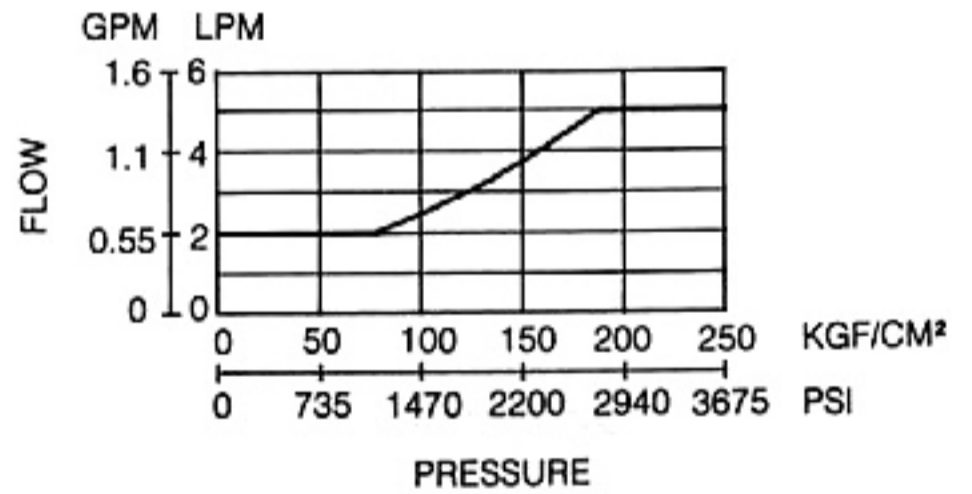
NOMINAL OVERRIDE CHARACTERISTICS



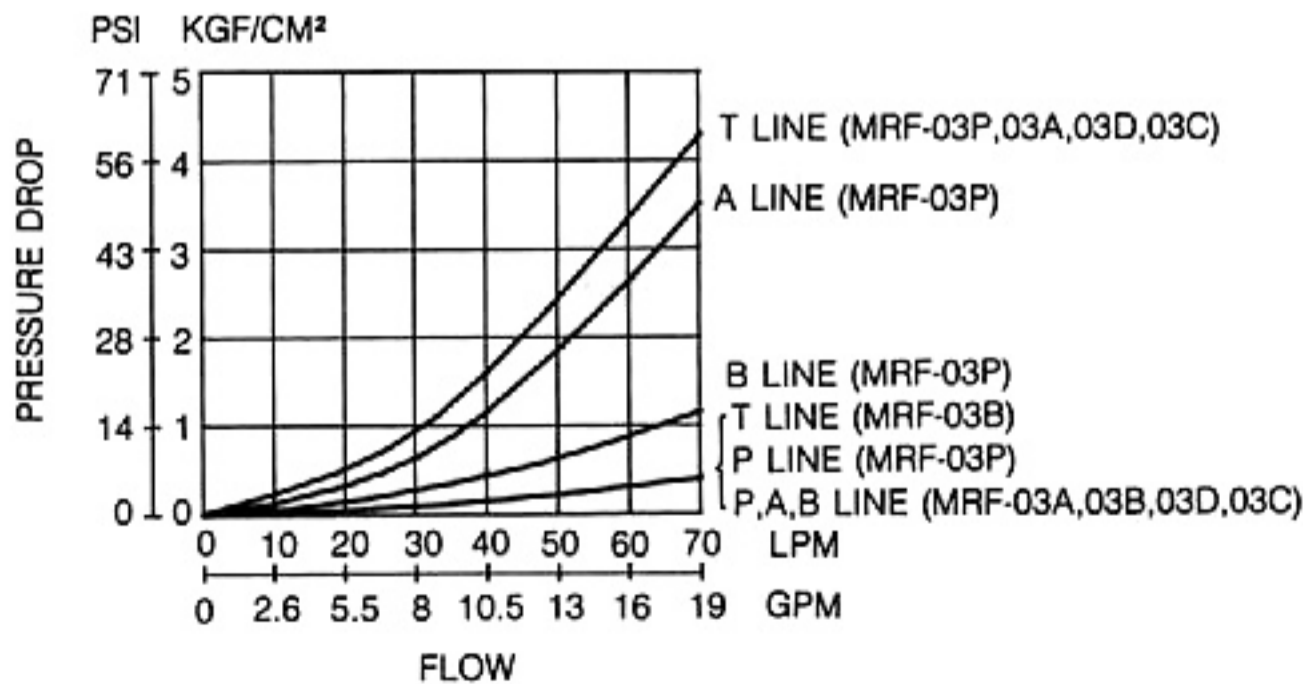
MIN ADJUSTMENT PRESSURE



MIN. FLOW VS. ADJUSTMENT PRESSURE



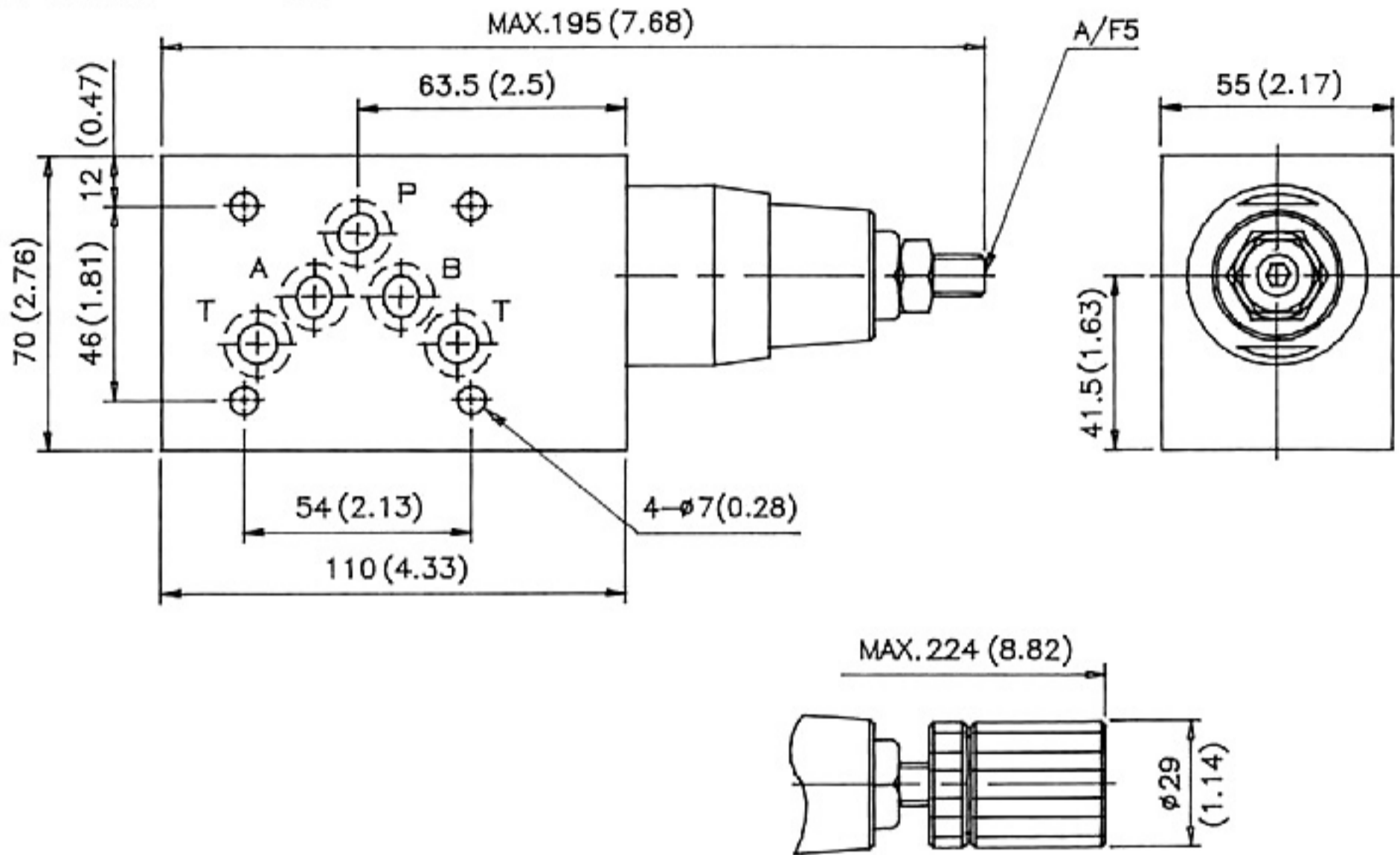
PRESSURE DROP



INSTALLATION DIMENSIONS

UNIT: mm(inch)
WEIGHT: 3.3kgs (7.28lbs)

MRF-03P/A - * - * - 30



MRF - 03B - * - * - 30

