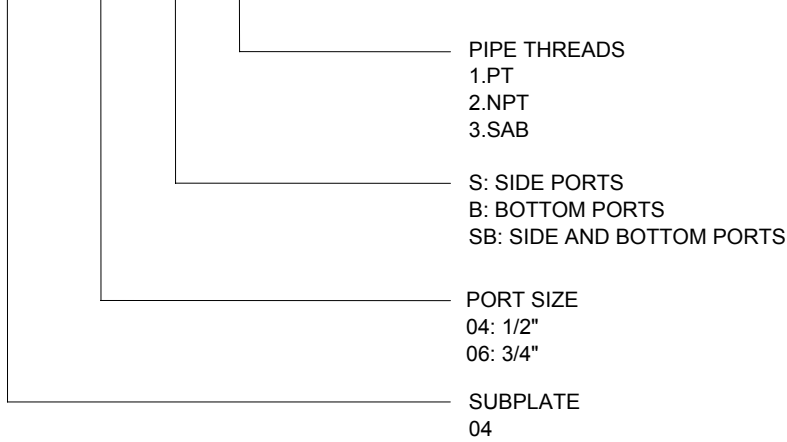




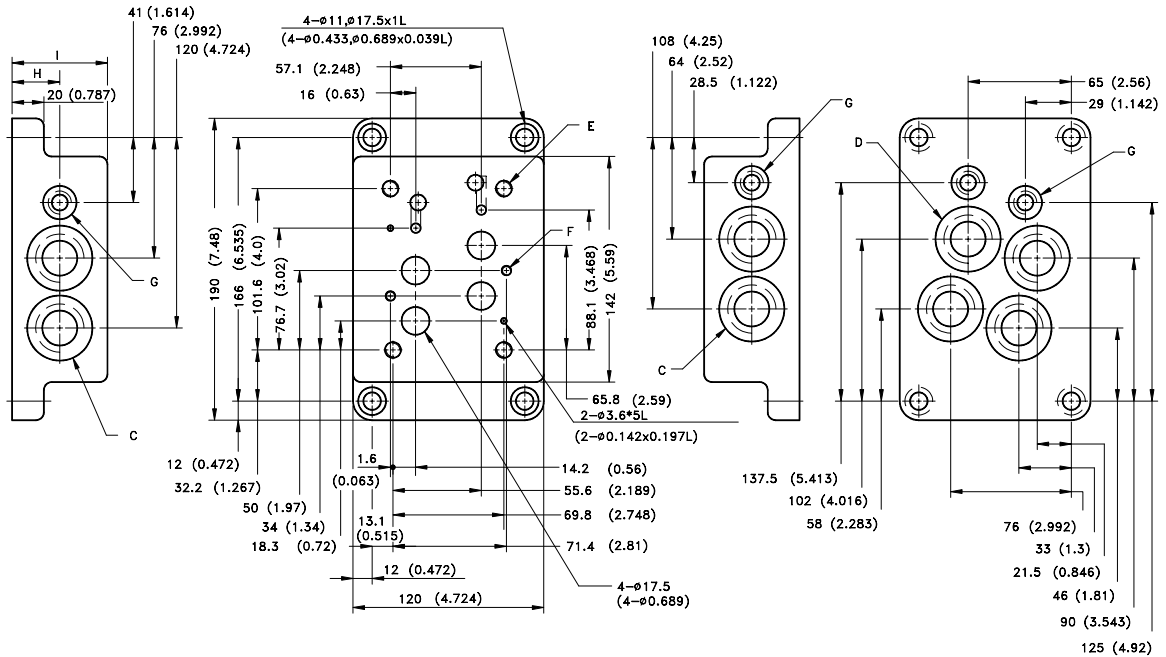
**HOW TO ORDER**

**M04 – 04 – S – 1**



**INSTALLATION DIMENSIONS**

UNIT: mm(inch)  
WEIGHT: 8.4 kgs(18.5 lbs)



**SUBPLATE**  
M04 SERIES

UNIT:mm(inch)

MODEL		PORT SIZE & INSTALLATION DIMENSIONS							
		C	D	E	F	G	H	I	
M04-04	- S	-1	4-1/2"PT	-	4-M10 x 1.5P	2-M6x1.0P	2-1/4" PT	-	36 (1.417)
		-2	4-1/2"NPT	-	4-3/8-160 UNC-2B	2-1/4-20 UNC-2B	2-1/4" NPT		
		-3	4-1/2"SAE-2B	-	4-3/8-160 UNC-2B	2-1/4-20 UNC-2B	2-1/4" SAE-2B		
	- B	-1	-	4-1/2"PT	6-M12x1.75P	2-M6x1.0P	2-1/4" PT	30 (1.181)	60 (2.362)
		-2	-	4-1/2"NPT	6-1/2-13 UNC-2B	2-1/4-20 UNC-2B	2-1/4" NPT		
		-3	-	4-1/2"SAE-2B	6-1/2-13 UNC-2B	2-1/4-20 UNC-2B	2-1/4"SAE-2B		
	- SB	-1	4-1/2"PT	4-1/2"PT	6-M12x1.75P	2-M6x1.0P	4-1/4"PT	30 (1.181)	60 (2.362)
		-2	4-1/2"NPT	4-1/2"NPT	6-1/2-13 UNC-2B	2-1/4-20 UNC-2B	4-1/4"NPT		
		-3	4-1/2"SAE-2B	4-1/2"SAE-2B	6-1/2-13 UNC-2B	2-1/4-20 UNC-2B	4-1/4"SAE-2B		

MODEL		PORT SIZE & INSTALLATION DIMENSIONS							
		C	D	E	F	G	H	I	
M04-06	- S	-1	4-3/4"PT	-	4-M10 x 1.5P	2-M6x1.0P	2-1/4" PT	-	36 (1.417)
		-2	4-3/4"NPT	-	4-3/8-160 UNC-2B	2-1/4-20 UNC-2B	2-1/4" NPT		
		-3	4-3/4"SAE-2B	-	4-3/8-160 UNC-2B	2-1/4-20 UNC-2B	2-1/4" SAE-2B		
	- B	-1	-	4-3/4"PT	6-M12x1.75P	2-M6x1.0P	2-1/4" PT	30 (1.181)	60 (2.362)
		-2	-	4-3/4"NPT	6-1/2-13 UNC-2B	2-1/4-20 UNC-2B	2-1/4" NPT		
		-3	-	4-3/4"SAE-2B	6-1/2-13 UNC-2B	2-1/4-20 UNC-2B	2-1/4" SAE-2B		
	- SB	-1	4-3/4"PT	4-3/4"PT	6-M12x1.75P	2-M6x1.0P	4-1/4"PT	30 (1.181)	60 (2.362)
		-2	4-3/4"NPT	4-3/4"NPT	6-1/2-13 UNC-2B	2-1/4-20 UNC-2B	4-1/4"NPT		
		-3	4-3/4"SAE-2B	4-3/4"SAE-2B	6-1/2-13 UNC-2B	2-1/4-20 UNC-2B	4-1/4"SAE-2B		

REMARK: Various port sizes/ Pipe Threads are available upon request.