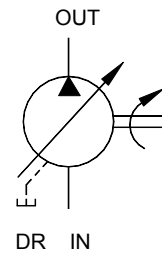


# VARIABLE DISPLACEMENT PUMP

## VPVC-F30 F40 SERIES



### SYMBOL

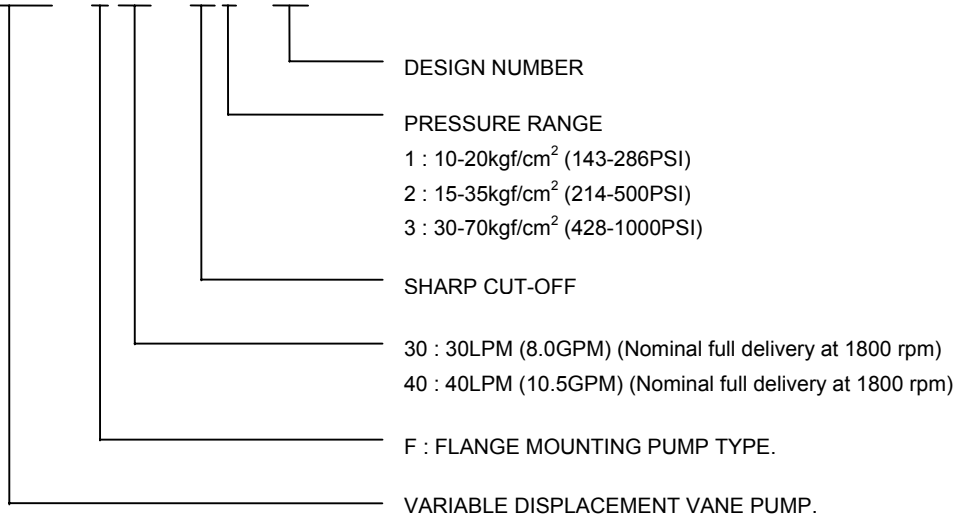


### FEATURES

- VPVC-F\* series offer design engineer another opportunity to design circuits with high efficiency.
- Built-in compensator control automatically adjusts pump delivery to system volume requirements at selected pressures. System relief valve is not needed.
- Horsepower waste is reduced and heat generated is much less than fixed displacement pumps.
- Volume control adjustment is standard which permits user to vary maximum pump output.

### HOW TO ORDER

**VPVC - F30 - A1 - 02**



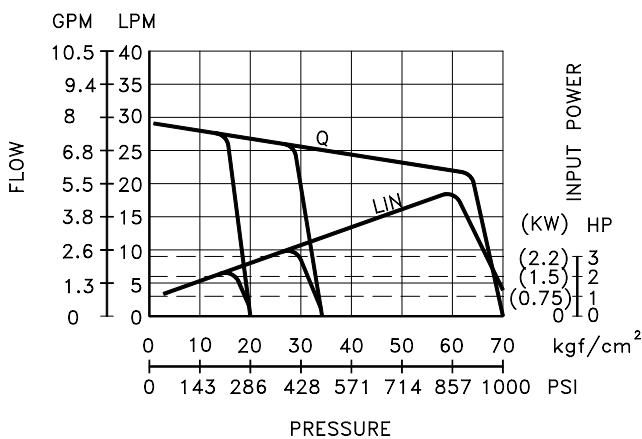


**SPECIFICATIONS**

MODEL	DELIVERY AT UNLOADING LPM		PRESSURE ADJ. RANGE kgf/cm <sup>2</sup> (PSI)	SPEED OF ROTATION		MAX. SET PRESSURE kgf/cm <sup>2</sup> (PSI)	WEIGHT kgs (lbs)
	1800rpm	1500rpm		MAX.	MIN.		
VPVC-F30-A1-02	30	25	10 - 20 (142 - 284)	1800	800	20 (284)	9 (20)
VPVC-F30-A2-02			15 - 35 (213 - 500)			35 (500)	
VPVC-F30-A3-02			30 - 70 (428 - 1000)			70 (1000)	
VPVC-F40-A1-02	40	35	10 - 20 (142 - 284)	1800	800	20 (284)	9 (20)
VPVC-F40-A2-02			15 - 35 (213 - 500)			35 (500)	
VPVC-F40-A3-02			30 - 70 (428 - 1000)			70 (1000)	

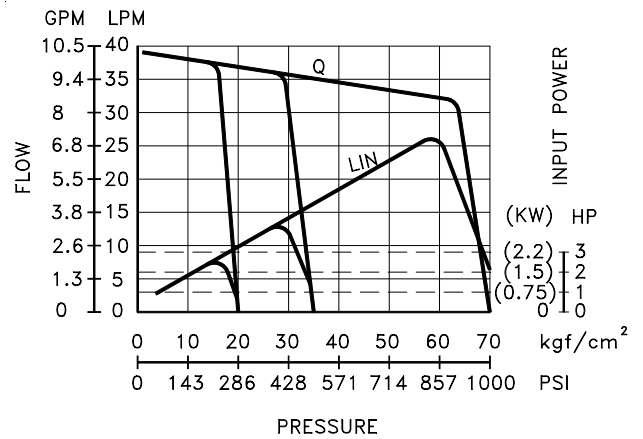
**PERFORMANCE CURVES**

VPVC-F30-A\*-02  
(1800 rpm)



Q : DELIVERY  
LIN : INPUT POWER

VPVC-F40-A\*-02  
(1800 rpm)



Q : DELIVERY  
LIN : INPUT POWER

**VIRIABLE DISPLACEMENT PUMP**  
 VPVC-F30 F40 SERIES

**INSTALLATION DIMENSIONS**

VPVC-F30/F40-A\*-02  
 FLANG TYPE

UNIT : mm(inch)  
 WEIGHT : 9 kgs

